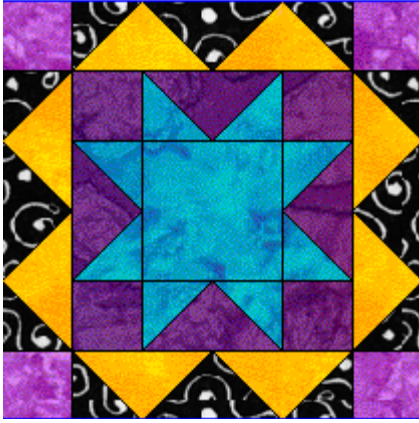


# Two Creative Studios

## Block of the Month - October 2009



### Block 2 - Eddystone Light

This 12" block can be constructed using several techniques. You can make this block using rotary cutting methods for the entire block. You can also use a combination of rotary cutting and paper piecing (for the star points); or if you prefer you can construct your block using templates. You'll find all the instructions and templates for all of these methods on the following pages.

Use your own color palette or follow ours.

All seams are  $\frac{1}{4}$ ".

#### IMPORTANT - PLEASE READ

Please note that not all printers work the same. You should check the measurement of your printed templates. Sometimes a computer/printer system will resize the printout and your measurements won't be accurate.

Paper piecing unit 1 should measure 4.5" x 2.5" when printed. If your's doesn't print with this measurement you can easily redraw it to the correct specifications. Draw a rectangle that measures 4" x 2". On one 4" side, mark a point half way or 2" along the side. From the two opposite corners, draw lines to that 2" mark. Now draw in your  $\frac{1}{4}$ " seam allowance around the outside so that the unit measures 4.5" x 2.5". You will need four of these.

Paper piecing unit 2 should measure 8.5" x 2.5" when printed. If you need to redraw it to the correct size, start by drawing an 8" x 2" rectangle. Make a mark along one 8" side at the 4" point or midway point. On the opposite side, make marks at the 2" point and at the 6" point. Following the example of unit 2 shown on the next page, draw the connecting lines. Now draw in the  $\frac{1}{4}$ " seam allowance around the outside so that the unit measures 8.5" x 2.5". You will need four of these.

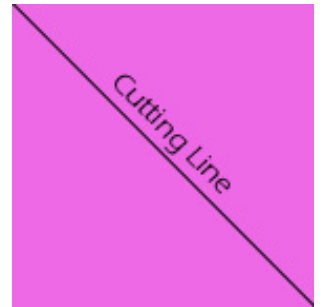
#### Rotary Cutting Directions

##### Squares

- From light purple fabric - cut four  $2\frac{1}{2}$ " squares
- From dark purple fabric - cut four  $2\frac{1}{2}$ " squares
- From turquoise fabric - cut one  $4\frac{1}{2}$ " square

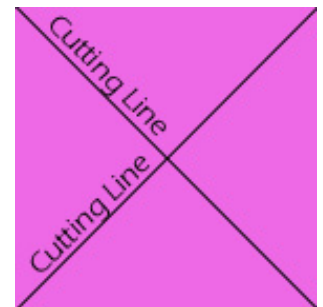
##### Half Square Triangles

- From black fabric - cut four  $2\frac{7}{8}$ " squares, then cut each square diagonally in half for a total of 8 triangles
- From turquoise fabric - cut four  $2\frac{7}{8}$ " squares, then cut each square diagonally in half for a total of 8 triangles



##### Quarter Square Triangles

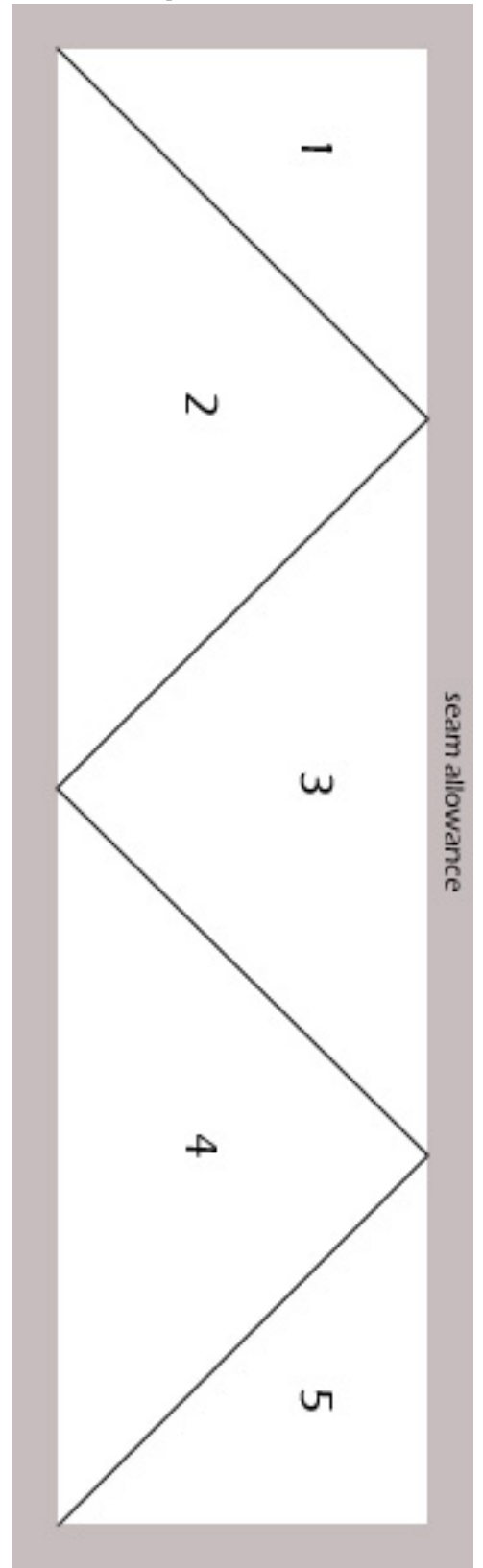
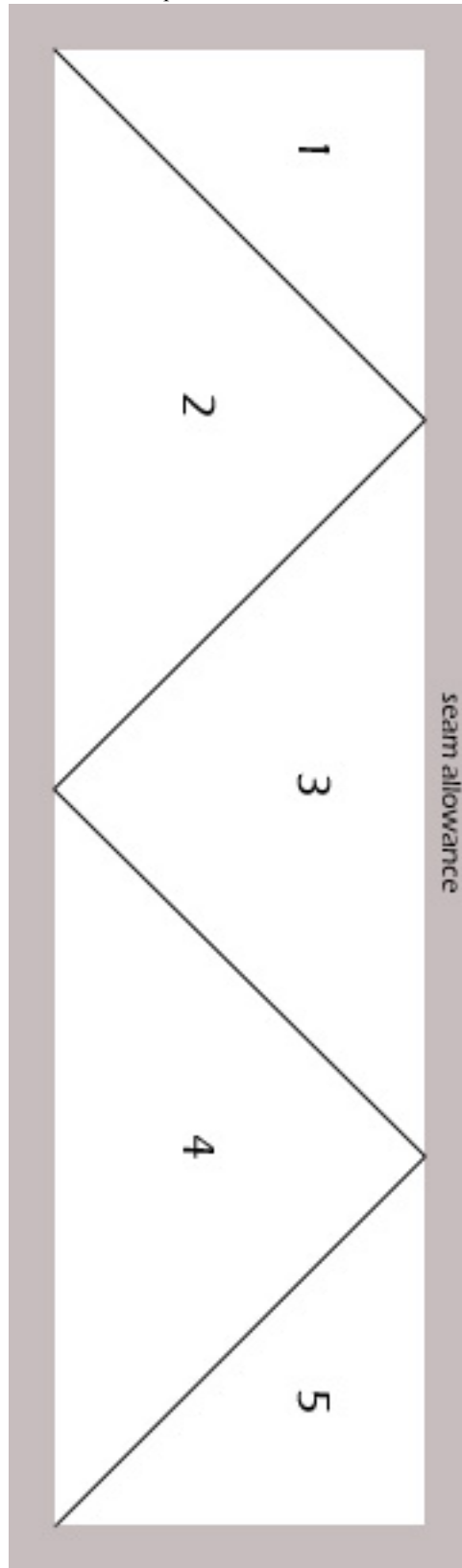
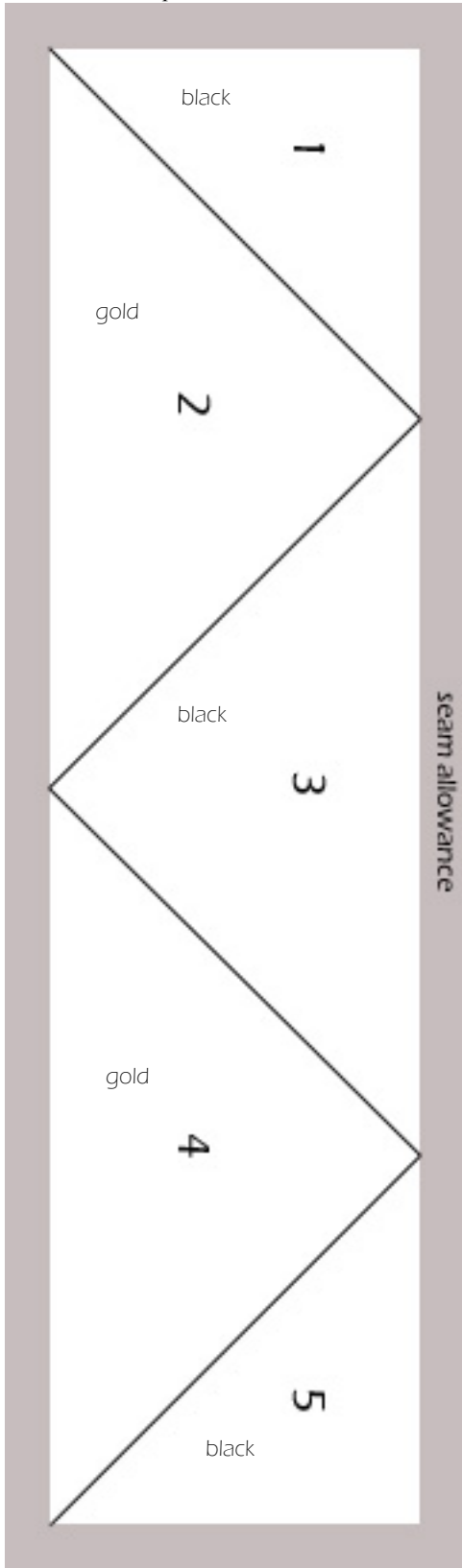
- From black fabric - cut one  $5\frac{1}{4}$ " square, then cut the square diagonally in half, twice. You should have four triangles
- From gold fabric - cut two  $5\frac{1}{4}$ " squares, then cut each square in half, twice; for a total of 8 triangles
- From dark purple fabric - cut one  $5\frac{1}{4}$ " square, then cut the square diagonally in half, twice. You should have four triangles



Paper Piecing Option - Unit 2  
Star points for outer star

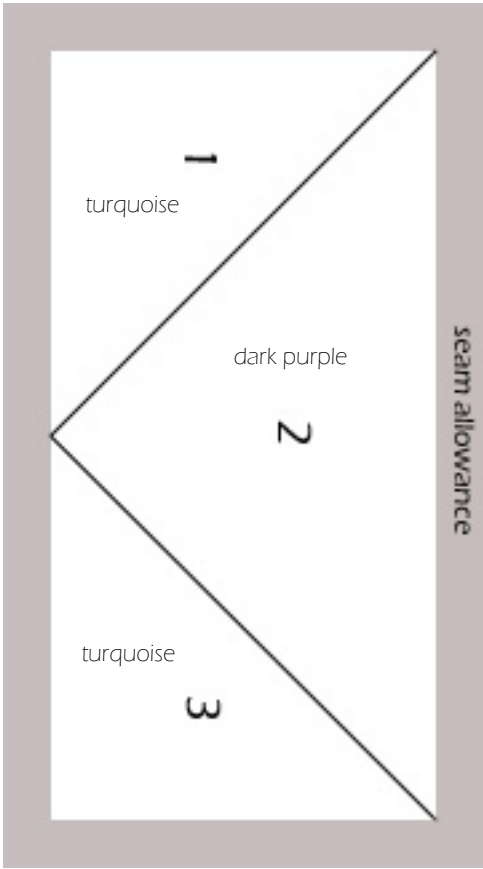
Paper Piecing Option - Unit 2  
Star points for outer star

Paper Piecing Option - Unit 2  
Star points for outer star

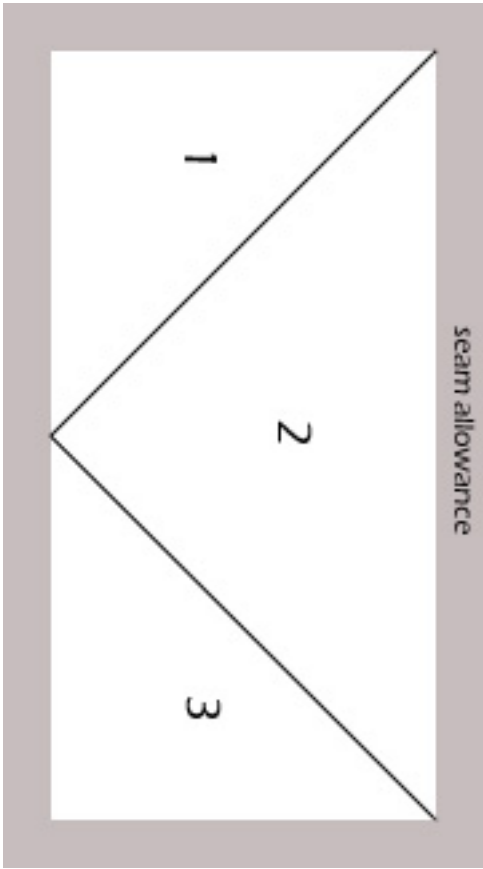


Paper piecing templates for the inner and outer star points. Using the paper piecing method, create your star points. Use rotary cutting techniques or templates to create the remaining fabric pieces for the block. One Unit 1 and one Unit 2 paper piecing template has been labeled with color placement according to the color scheme of the block shown on page 1. Remember, you can use your own colors for these block sections.

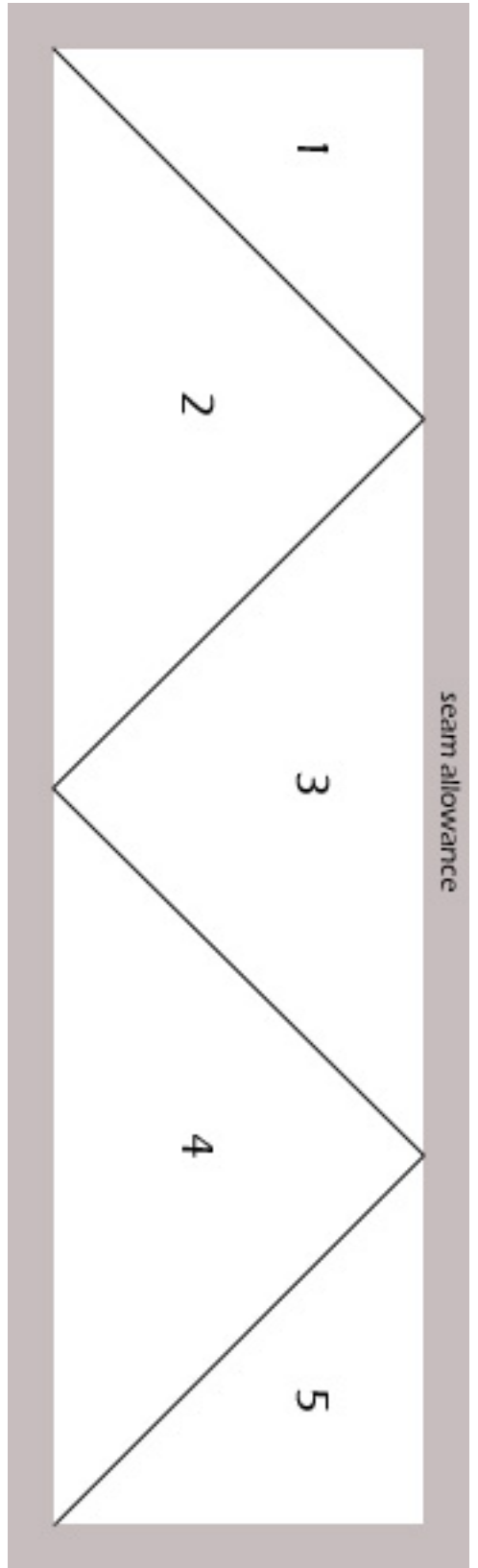
Paper Piecing Option - Unit 1  
Star points for inner star



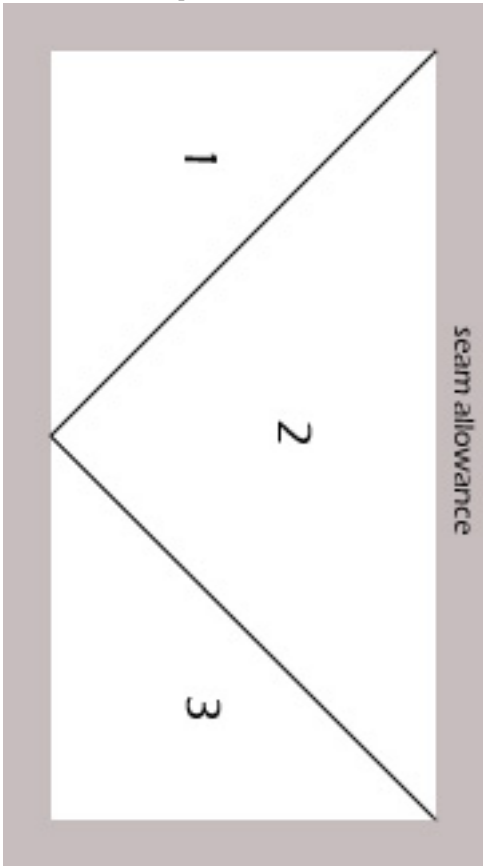
Paper Piecing Option - Unit 1  
Star points for inner star



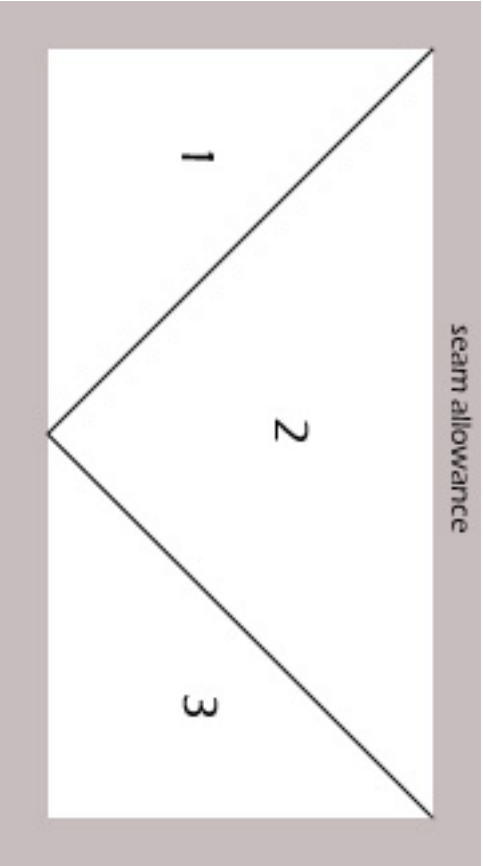
Paper Piecing Option - Unit 2  
Star points for outer star

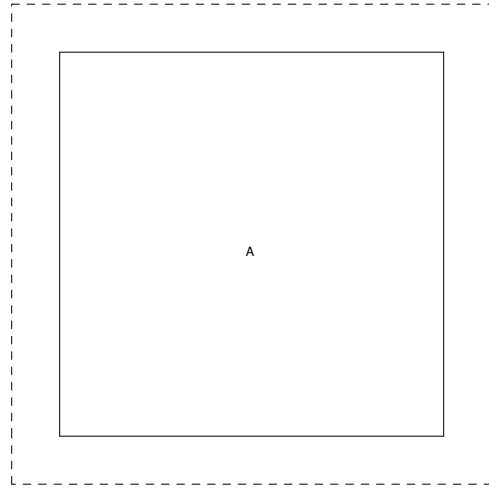
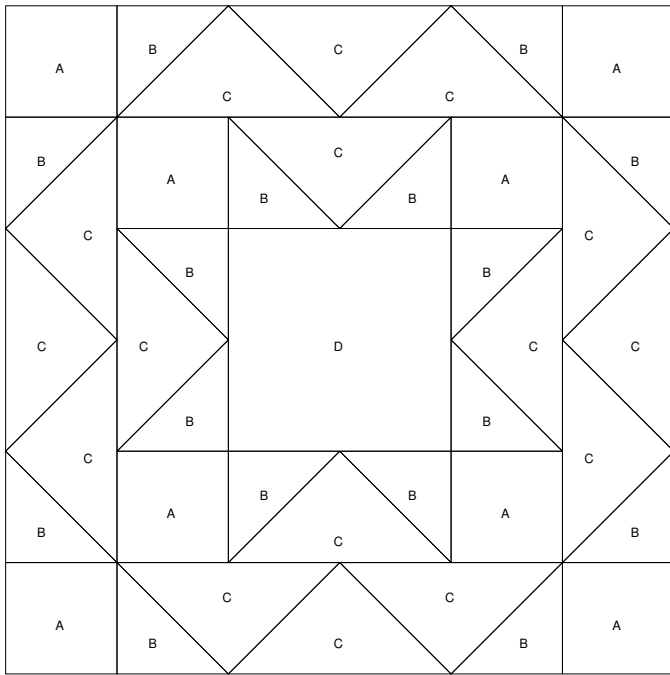


Paper Piecing Option - Unit 1  
Star points for inner star



Paper Piecing Option - Unit 1  
Star points for inner star





Use these templates if you prefer to piece your quilt block using a template method. Check template A to see if your printer has printed the templates accurately. Template A should measure 2.5" x 2.5".

